

Appendix 7 Wards Corner amendment plans

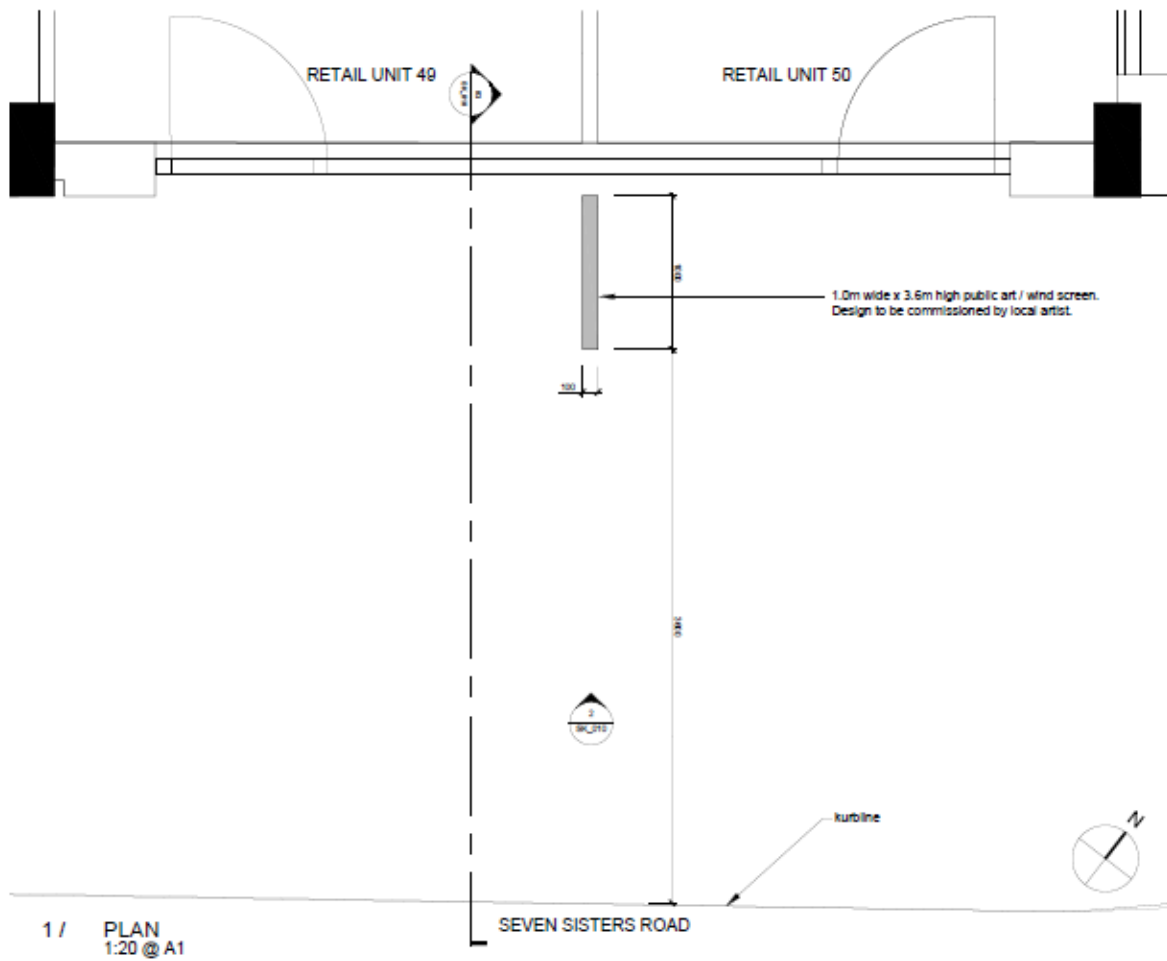
Site Location Plan



Amended floor plan



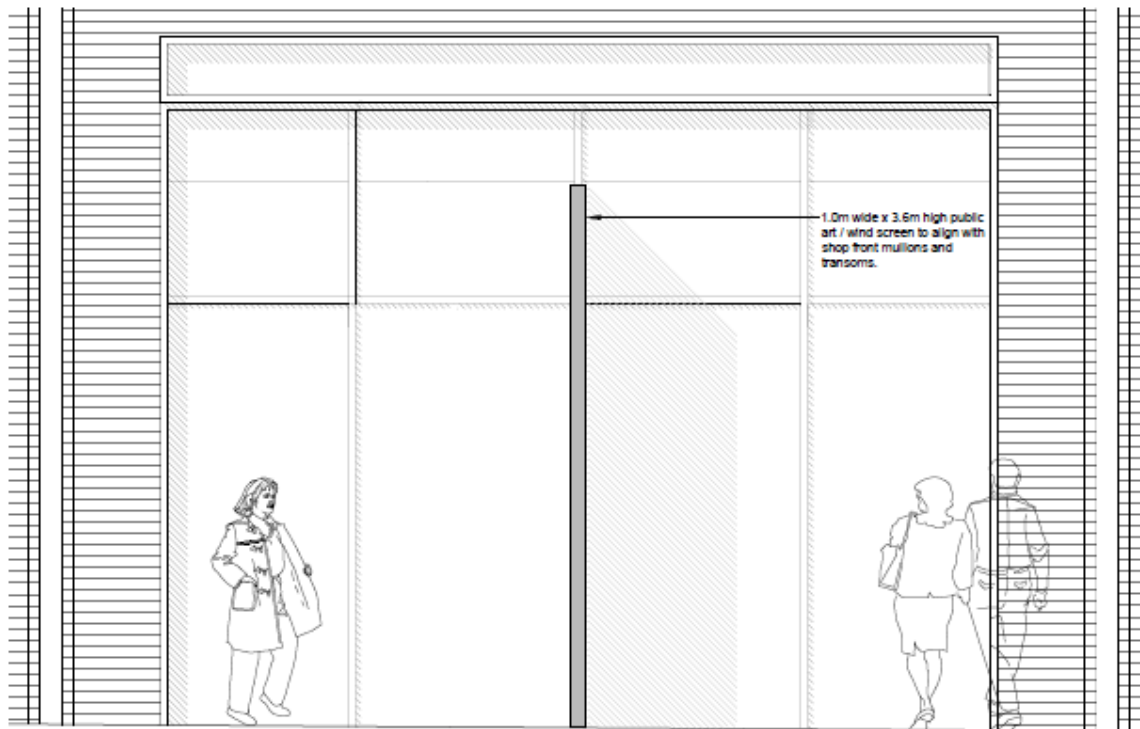
Detail of amendment

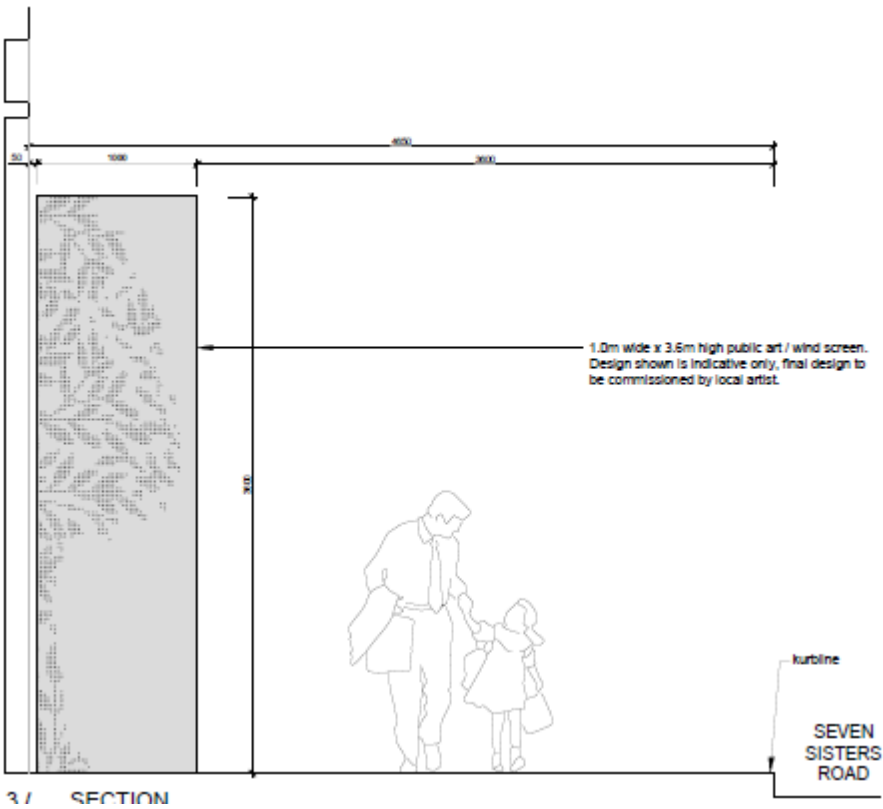


Amended elevation



Amended elevation detail





Public art



LAZERCUT METAL PANEL - PRECEDENT IMAGES

The wind screen will be commissioned public art and is proposed to be clad in a durable and hard standing steel, suitable for the public realm, with laser cutting techniques used to convey a motif/story whilst playing with light and shadow. The current proposal is indicative only with the final design to be commissioned by a local artist. A solid panel within the construction will ensure the screen sufficiently acts as a wind mitigation mechanism to the proposed market entrance.